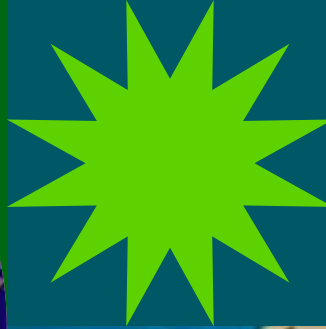


# ACH FORIN NESOR ME PONON

Och anapanapen ochun ongonongon me eoreni faniten meinisin

Portland Metro Region mei pachonong Clackamas, Multnomah, me Washington Counties



Ew Kokotun an Portland  
Ewe Regionun Tri-County

# MENNAPAN

**Ach Kokotun Nesor me Penon me non ei kinikin mei anongonong won an ei kinikin uruon chungu me eoroni non unusen ei tri-county Portland. Mei wor fisuu mwuu mei angangfengen iei ne fofori kokotun mokutukutun anongonong won met non ei kinikin. Ekoch teninimw, neniachkewe, me aramas mei kokoto ar repwe aea pisekin non ekei neni.**

## Ach Kokotun nesor me penon mei pesei angangen neniachkewe faniten uruon chungu me eoroni.

Ei uruon chungu me eoroni ina met e sokono me eochuu achewe kinikin. E ochuu kich ussun ew aramas, awora ew minafon ew ekiek ren aramas unukuch, anisikich ach sipwe chikarseni me anganga osukosuken non neniachkewe. Met mei pwung me non ewe 2009 non ewe fansoun ewe saingon kokotun ei kinikin a foruta a kon fen pwungungeni met a fish engon me nimwu ier mwirin. Uruon chungu a fen ew eucheane masowen manawach.

Ei kokot, faniten nesor me penon, ew anapanap me non ei kinikin mei for faniten an achkewe aramas kokot, iwe ei aramas mei tongeni aea uruon chungu me eoroni faniten chochon.

Seni ekewe chungu won simen ika etip e foruta faniten mwokutukutun aramas ngeni ekewe poem me mak a mak an epwe maketiwe ekei fansoun non uruo, sia ewini ei uruon chungu an epwe ew anapanapen ningeoch me riafou. Neniachkewe ra mefi fotun akanamon non ewe fansoun pandemic, ekewe pwworukun non neniachkewe nukun mei ochuu kich non tumwun. Iei sia fori pwun ekei masowen eoroni me kokotun pisin mei kono repwe amanawasefani angangen monien mwuu mwirin ewe pandemic, iwe sia invest non programun chungu an epwe anisi aramas ar repwe chikarseni weiresin angangen keimwufesenin aramas ika kirikiringaw me fansoun eseor iimwer.

Meinisin chochon neniachkewe ra anongonong won achkewe uruon chungu me eoroni non watten me kukunun anen epwe apwapwai, asarama, me apochokuna neniachkewe ach sipwe nonom

non. Souemwenin ei kinikin ra angangfengen me chochon neniachkewe ar repwe ponuweni ewe eucheane kapaseis: “ Sia mochen epwe ifan nikinikin manawen nesor me penon faniten ekewe re nonom ikei?”

Non fansoun angangen akokot, ewe mwichen kasii a fis pwun awen aramas. Non ach angangfengen, sia tori napeseni 3,500 amaramas non 50 session, 40+ interview, me ruu settin kapaseis mei tou ngeni ei kinikin. Sia porousngeni ekewe mei sinenap non sokopaten wewe, eoroni, ekiek mei sokono, chungu me ekewe angangen eoroni ese kamo, pisin mei sokono, chon aninis ren moni, chon katon, me ekewe re mochen angang, chon sukun, ekan re karan kaeo, me ekoch re pwan pwapwaiti uruon chungu me eoroni non sokopaten napanap.

Met sia rong mei fatafateoch. Uruon chungu me eoroni mei eucheane ngeni manawen me pochokunen ew me ew choon aramas. Sia kuna ekewe angangen chungu, angang mei sokono, chon mwarini eoroni, me ekewe angnagen eoroni ese kamo ussun ew:

- Eucheane metoch ngeni an ach ei kinikin pochokun
- Eucheane ngeni naponon ekiekin nonomweoch me memefin pwun kich chon ikewe
- Aninis ngeni osukosuken neniachkewe ussun ekewe rese wor imwer, marin ekewe teninimw, pochokunen non mokurach, waa, me eimweimw mei mokukun, tumwunun neniachkewe, me sokopaten metoch

Mei fatafateoch pwun ekewe mei sine chungu me ekewe angangen eoroni rese kamo mei asokonoi manawen aramas non ar anisi mwokutun mwuu. Ekewe aramas re anganga uruon chungu me eoroni iir ponuwen me chon anganga ew mwokutukut mei sokonon.

Ewe mwichen kasii mei nom non neniachkewe ra kakaton nefinen me porousfengen pwan forata ew ekiek faniten uruon chungu me eoroni:

**Ewe kinikinin tri-county mine chochon repwe tongeni tourngeni ekewe uruon chungu, eoroni, me mwokutukut mei sokono an epwe ew eucheane kinikinin manawach.**

Ei ekiek a nongonong won pochokunen uruon chungu me eoroni non neniachkewe epwe pwan sapata meren ach mwuu, souemwenin neniachkewe, ekewe chon chungu, chon mwarei ach eoroni, me emon me emon ami.

Sia angangfengen me chiechiachkewe non neniachkewe me mwuu ach sipwe awora pisekin ei kokot ne omwokutu an neniachkewe ei ekiek. Masowen ei angang, ewe mwichen kasii a fori ew kokotun met sipwe angang fanitan me met sipwe fori non ew me ew achkewe neni. Met sipwe angang fanitan:

- Anganga neniachkewe epwe wor rer uruon chungu me eoroni mei ochuu aramas mei pwarano, angang fanitan, me etiwa meinisin
- Fori nefinen aramas epwe wor eochun wewen me akokot fengen me ekewe aramas mei angangen uruon chungu me eoroni.
- OPOCHOKUNA ewe aramas re angangen uruon chungu me eoroni non ach fang pisek me aninisin moni
- Omwokutu monien mwuu ren angangen uruon chungu me eoroni non neniachkewe
- Anamwota kichkewe si angangen uruon chungu me eoroni pwun epwe emon eucheane chiechiach non pochokunen me mamarin ew me ew neniachkewe.

Ekei metoch sia angang fanitan me kokotun ach angang epwe anisikich ach sipwe anganga an ew me ew neniachkewe need nge pwan anisi ach sipwe angang fengen ussun ew chok kinikin.

Ei angang a fis pwun ew kokon mwokutukut ngeni achkewe mwuu, nouchkewe souemwen, me neniachkewe mei angangen uruon chungu me eooni ach sipwe sopweno ach angangfengen faniten nonomweochuch me pochokunach nesor me penon. Nonomwuch mei sokono nesor me penon a chok utikich!

**Katon unuseochun ei kokot ikei.**

### FANSOUN AGANGEN NON NEENIACH

Aneen ach sipwe forata ei otot me pwan ekoch mwokutukutun non mwuun neeniach

#### PEKIN PENI

- Apach non me aninis faniten ionen moni, prokram, me ekesiwinin non neeniach.
- Apach non me aninis faniten foritan ekewe eureur masowen ei otot.

#### APACH

- Apach non direktory, nounou fengen porous, network, kalenta, me kachun marketing.
- Fiti mwichen non neeniach me asos fengen.

#### EMWENI

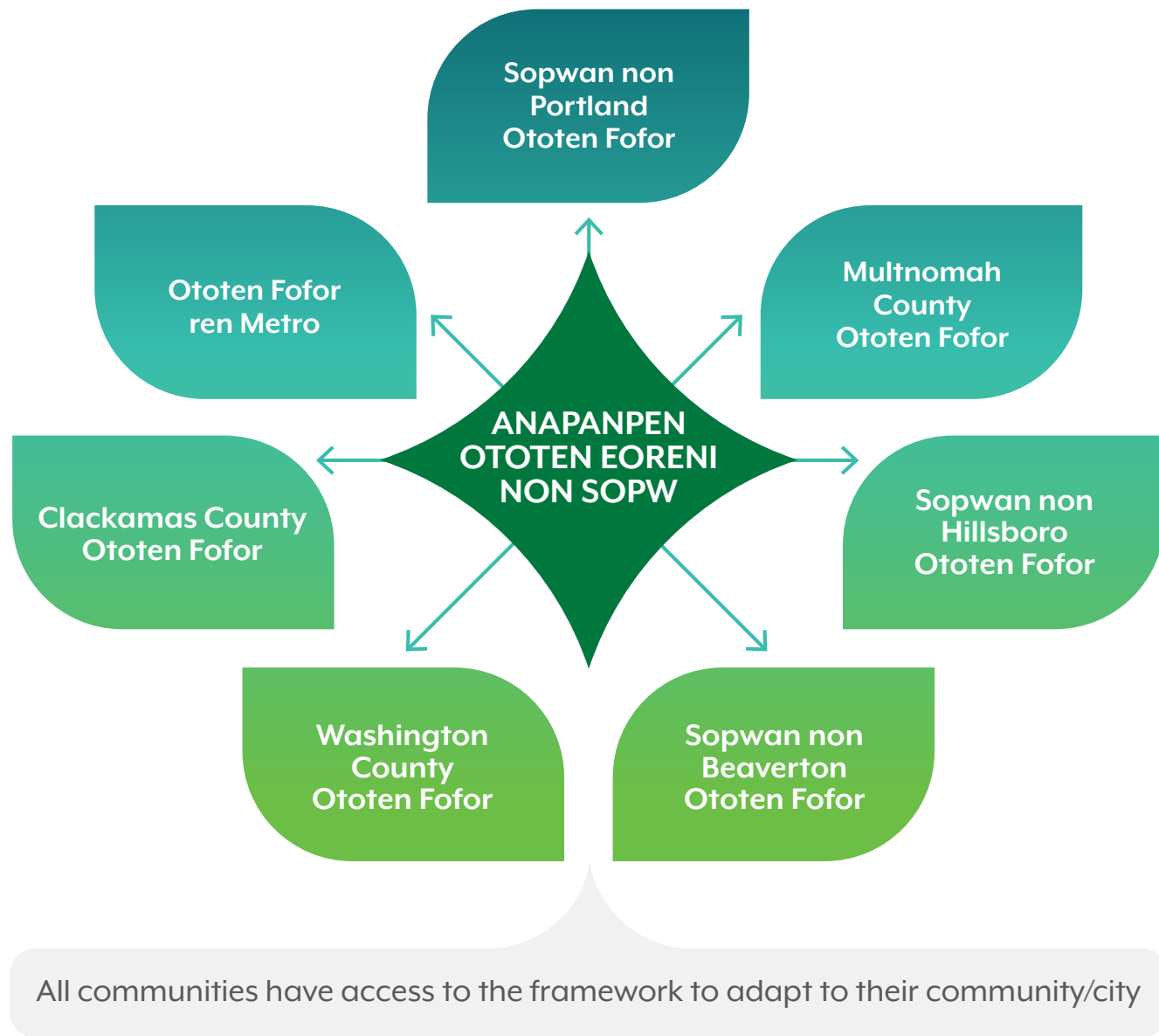
- Tonong non wiisen emwen—angang ngeni ewe committee, board, commission, ika mwichen aninis, ika sa ngeni ofes.

### FANSOUN ATUFICHIN CITIES ME SOPW

Aneen anapano pekin arts me eoreni non neeniomw:

- Fini me nein ekewe eureur masowen ewe otot me fori angang won met mi ouchea non neeniomw.
- Tikeri ekewe network ren art achensi non neeniomw ren sopwosowpen porous me aninis. Ekieki ika kopwe apach non ena network.

## Anapanapen Kokotun Eoreni mei nongonong won ei Kinikin



# ANGANGEN KOKOT

## Met sia mochen faniten Omwokutun Aramas

1. Aporous ika omwokutu chochon sokopaten neniachkewe non achewe kinikin.
2. Angangfengen ne fori ew mwokutukutun epwe anganga an kinikinichwe need epwe eoch.
3. Fori me acheufetanei porous epwe omokutu mochenin, me angangfengen me fateochun mwokutuch.

## Met Sia Eis

1. Ikefa anen an ei kokot epwe anisi neniachkewe ne mareoch?
2. Non ach ekiekin manawen kinikinichei nesor me penon, met ke mochen epwe sokono seni ikenai? Mei fisieoch? Ese fisieoch?
3. Ikefa ekana ruu ika unungat metoch sikon wessen mochen epwe pwonuta?
4. Met epwe fis iwe sia ura pwunmei pwonuta ika fisieoch achewe kokot?

## Mwichen Omwokutu



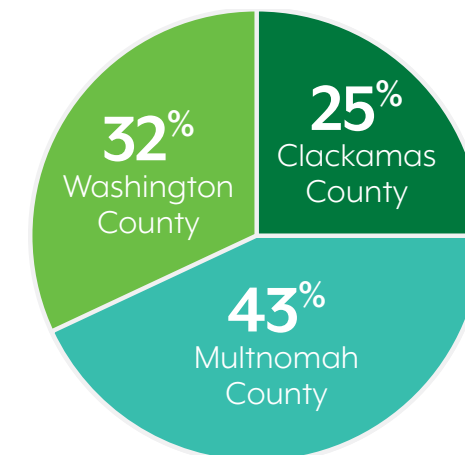
*“Angangen chungu esapw choke ew anen sipwe chip; pwan ew anen sipwe aporoua manawach me met kich mei weweti.”*

Chochon ewe Porousfengen an Sarafon ekewe Eseor Imwer (Houseless Youth Discussion Participant)

## Research

## Kapaseis Faniten Mefien Aramas

705 a ponu



katon meinsin reportun research ikei, mei pachenong:

- Kapaseis Faniten Kokon Achocho
- Reviewn Forun Grant faniten Chunga
- Reviewn Anapanap ren Monien Chunga
- Studyn Mochenin ika Need ren Arts
- Chungan ika Anapanap ren Monien Mwu



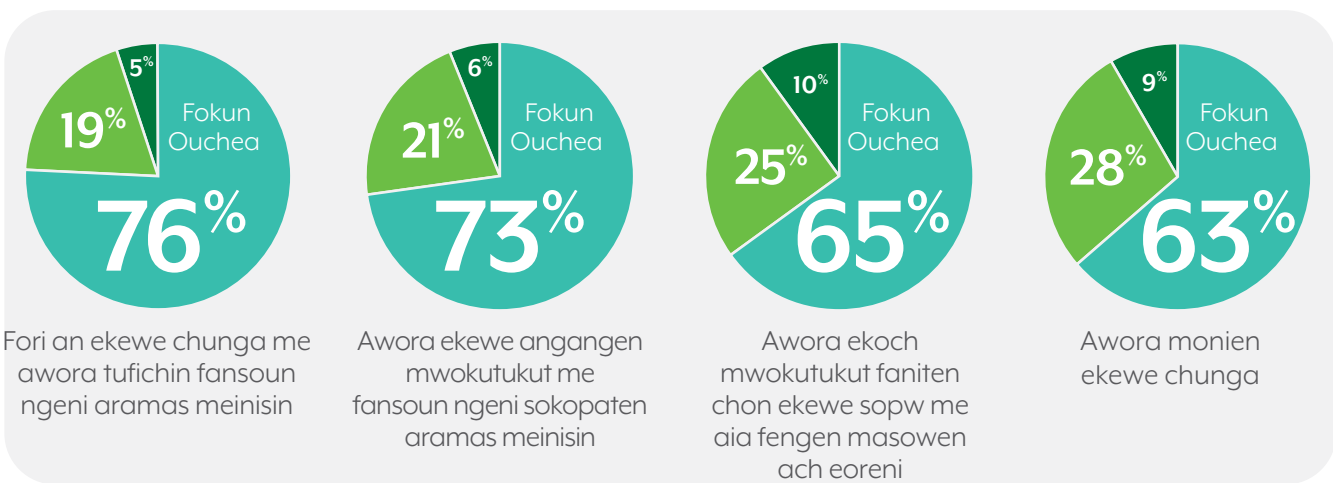
# MET SIA KAEO

1. Non unusen ewe kinikin, chochon mei fokun eucheani uruon chungu me eoreni faniter pwan faniten neniachkewe. Nuseni esopw ekewe chon war mei fokun pwapwan fori angangan. Ra eucheani anonopokun aramas, tourun metoch ngenir, kochuun aramas, me aninisin moni faniten uruon chungu me eoreni.

Esinesin: meinisn ponuwen kapaseis e feitoseni ewe kapaseis ren chochon aramas.

## MET MI OUCHEA NGENI CHON EWE SOPW Ren Chungu me Eoreni

Fokun Ouchea Ekis Ouchea Ese Ouchea

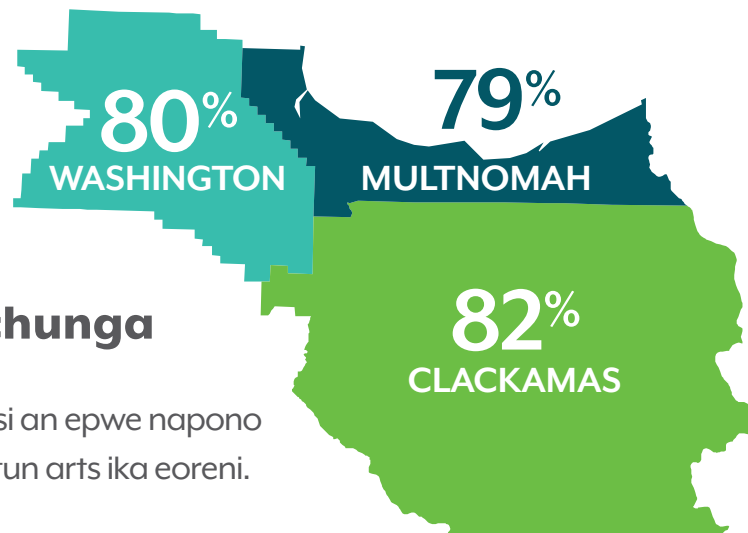


Q17. Ewe tri-county ototen chungu me eoreni a fisita an epwe anapono ochun manaw faniten chon non neeniach. Ekieki met ouchean nesor me ponon an ewe otot epwe nenengeni, kose mochen ratini ekei metoch.

Non ewe kinikinin sopwan,

# 80%

aramasen tri-county mi anisi eochun monien chungu

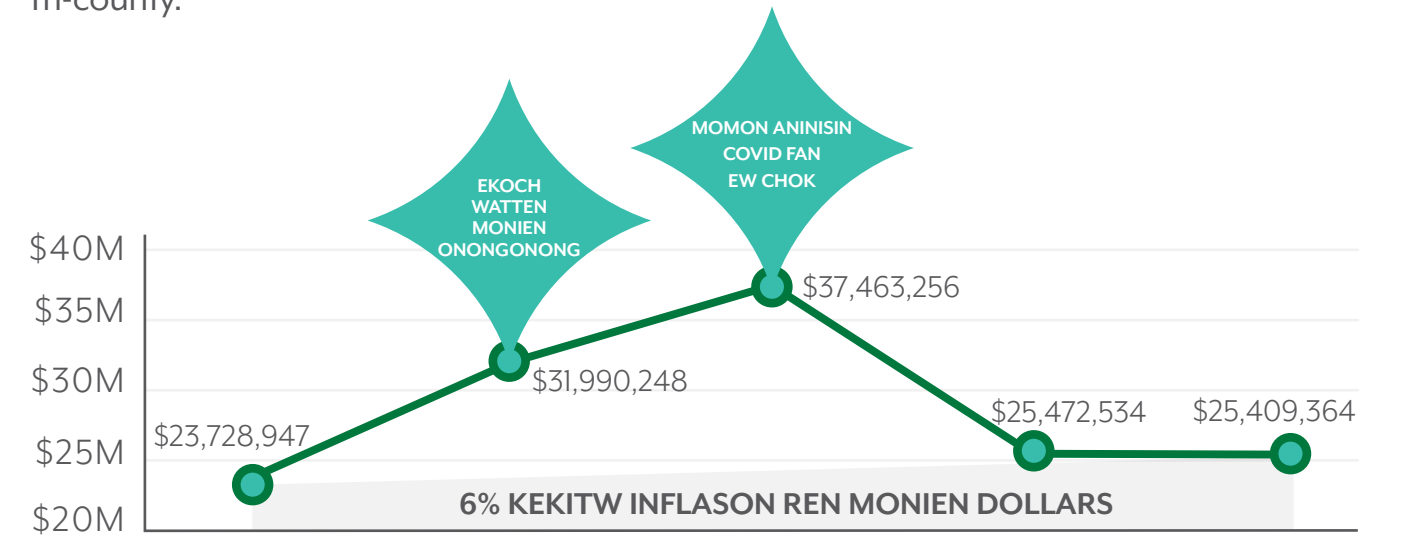


Nein ekewe mi Pochokun ika Mwaren Anisi an epwe napono monien chungu mi pwan fiti mwokutukutun arts ika eoreni.

2. Neniachkewe mei angangen uruon chungu me eoreni mei churi chomongun me aweiresin osukosuk, iwe a ngaweno ewe anapanap ren tri-county ussun ew neniach sokopaten minafon sokun ekiek.

## KATONEN NIMU IER – UKUKUN MONIEN GRANT REN ARTS ME EORENI

Mi caferini moni mi no ngeni nonprofit arts me mwichen eoreni me ekewe artist seni ekewe tiwu public me private mwich ra awora monien ekei angang non sopwan Portland Tri-county.



### 3. Uruon chungu me eoroni mei sokopat wiisan mei afeiochu neniachkewe.

#### MEMEFIN PUBLIK SURFEI

Chomong chon winipwos ra tipeyew pwun ekewe chon pekin artistic, eoreni me aramas mi fori ekewe pisek ra men anisoch ngenir, ar famini, me chon non neenier.

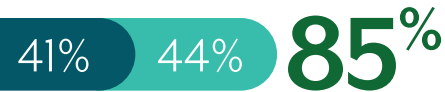
#### CHON WINIPWOS NON TRI-COUNTY

- Pochokunen Tipeyew
- Ekis Tipeyew

“Ach chungu, eoreni, me chon fori metoch non neeniach ra anisi minafon otot me non ach economy.”



“Aworen fansoun repwe katon ekewe chungu me kaieo forin metoch mi ouchea ngeni ei me fai famini.”



**74%** nein chon nomw tri-county ir mi pach non ew ekewe pekin chungu/eoreni me non ewe onu maram a no.

“Sia mochen ochufengeni me pachenong eoroni me uruon chungu non unusen achewe county pwan napeseni. Sia mochen aeafengen me awatenoi nonomwuch.”

Emon chon ponuwani Kapaseis faniten Neniachkewe

### 4. Uruon chungu me eoroni mei amari mwonien mwuu non kinikinichwe me awatenoi uwan an aramas wanong nour moni non mamarin neniachkewe. Mei chomong anen aninis ngeni sotosoponon mamarin neniachkewe.

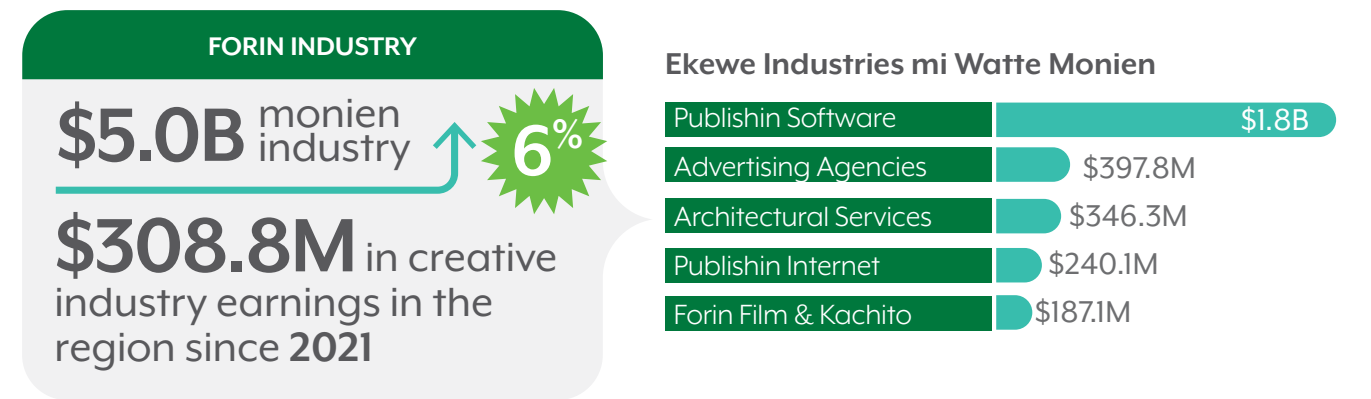
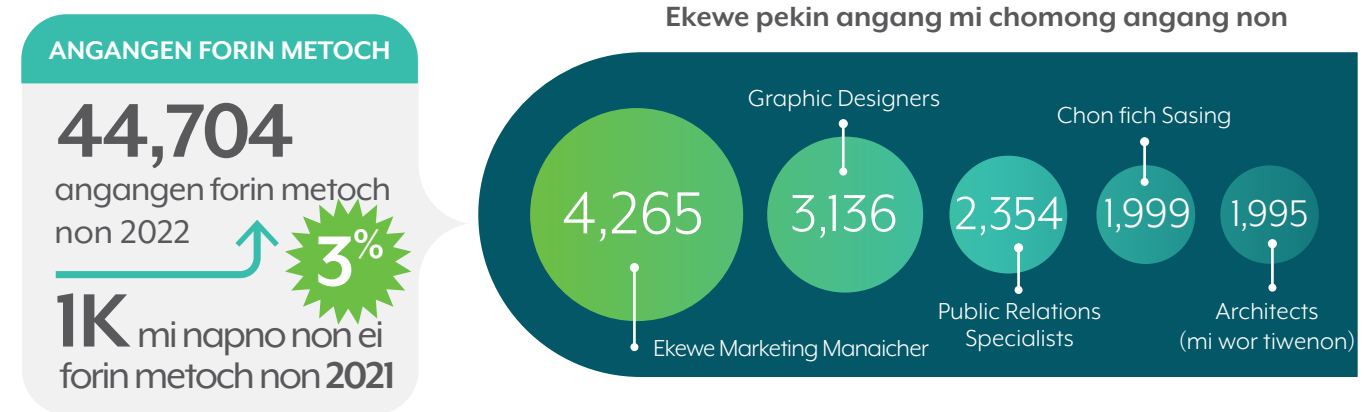
#### NON 2022, ACH EWE NONPROFIT ARTS ME EORENI MI AWORA



me angang ngeni ukukun nunun **~5.2M** aramas

Arts & Economic Tufichin 6 (AEP6)

#### IN 2022, OUR FULL CREATIVE ECONOMY, INCLUDING BOTH NON-PROFIT AND FOR-PROFIT CREATIVE BUSINESSES, GENERATED:



# MET SIA ANGANG FANITAN ME KOKOTUN ACH ANGANG

**Ewin met sipwe angang fanitan: Awatenoi ach apachanong aramas re anganga uruon chungga me eoroni an epwe pwari, anganga me etiwa meinisin.**

**Meinisin neniachkewe me aramas iir euechean chochon an neniachkewe choon angangen uruon chungga me eoroni pwan chon aeafengen non pochokunen eoronian. BIPOC, ekewe pecheseset ngeni ewe neni, LGBTWIA+, aramas mei wor terir, me aramas non meinisin ekewe teninimw me non unusen ekei unungat county, mei tumwun meren nouchkewe chon aninisi non an achewe kinikin eoroni.**

## Kokotun Angang

- 1.1 Awora aninisin moni me ekoch pisekisekin uruon chungga me eoroni faniten ekewe aramas chochon BIPOC, pecheseset, LGBTQIA+, mei wor terir, ekewe eseor imwer, wor osukosuken non ar ekiek, chinnap, me ekewe sarafo (ekewe enuwen me fopwun 16-24 ierir eseor ar sukun me angang), me ekewe mwicheich non neniachkewe.
- 1.2 Awora aninisi ngeni programun imwen pwuk, koen, me ekoch neni non neniachkewe faniten ekewe aramas rese siin me non neniachkewe.
- 1.3 Awora aninisi ngeni ekewe teninimw non ewe kinikin ar repwe amari ar angangen chungga me eoroni.
- 1.4 Awora aninisin programun ekewe chon chungga, kumi me neni non ekewe teninimw kukun me neni eseor e kon afanir me non ekewe county.

- 1.5 Porous ika anganga ekewe epetin aean neni, awewe ren meon, waa, nenien park, me kaworen mongo. Katon pwan 3.3, programun neni mei meoeoch, fan ei.
- 1.6 Awora ew monien aninisi mei anonopoku chon sokopaten aramas me eoroni faniten ekewe emwicheichen BIPOC me pwan ekoch emwicheich mei angang ngeni ekewe aramas ese kon wor chon afanir non pekin uruon chungga me eoroni (awewe, ekewe eseor imwer, ekewe sarafo mei weires ar sukun me angang, me ekewe mei wor terir), an epwe awora anen nonomwochur me marin ekei emwicheich.
- 1.7 Awora aninisi me anen ekewe city me county repwe amari ar ofesin anonopokun agency uruon chungga me uruo.
- 1.8 Eochuweno me awora monien mecheresin anen me tourngeni ekewe programun uruon chungga me eoroni, neni, me tongeni an aramas mei wor terir.
- 1.9 Sopweno ne awatenoi aninisin an ekewe K-12 osukun non pekin uruon chungga me marin an sarafo sokopaten ekiek.
- 1.10 Sopwe ne awatenoi aninisin program ngeni aramas faniten uruon chungga non teninimw me county non ewe kinikin.
- 1.11 Amari emwenin neniachkewe an epwe ochuu aramas non angangen uruon chungga me eoroni.

## Oruen met sia angangan: For nefinen me angangfengen non neniachkewe non pekin uruon chungga me eoroni.

**Chochon neniachkewe re angangen uruon chungga me eoroni ramen angangfengen. lir mei pwan esina me porousfaniten eochean nefiner, ussun ew me ew won ar nge pwan kochufengenir (ar aninifengen) ussun masowen neniachkewe mei anganga uruon chungga me eoroni non achewe kinikin.**

## Kokotun Angang

- 2.1 Aea achewe kumien chon anganga uruon chungga me eoroni an epwe pesei chufengen non ar repwe wessen anganga ar repwe uweato chon chungga, chon mwarei eoroni, chon angang won mesen pour, ekewe kumien angang rese angang faniten moni, ekewe re amomo ar chungga, me ekoch.
- 2.2 Anapano angangen moni, me aninisi, me aporosa an epwe pachenong ekewe mei suuk ar ekiek me kukunun pisnis ar repwe angang faniten chunggan eoroni repwe amomo.

- 2.3 Anganga enukun mwuu me mwokutukut faniten angangen neniachkewe mei angangen uruon chungga me eoroni.
- 2.4 Amari an aramas weweochuti me sineochu porousen uruon chungga me eoroni non ewe kinikin.
- 2.5 Fori ew angangfengen ren ekewe agencyn chon chungga (awewe, Programun Chungga non Portland City, programun chungga non ewe county, programun chungga non ewe city, Emwicheichen Eoroni non ewe County, RACC) an epwe ekesiwinin Etipeewin nefinen Mwuu me opochokuna emwenin uruon chungga non ewe kinikin.
- 2.6 Anapano aeafengenin porous me pisek me angangfengen non neniachkewe mei angangen uruon chungga me eoroni.

## Eunungatin met sia anganga: Opochokuna neniachkewe mei angangen uruon chungame eoroni ren ach awora aninisin moni me pisekisekir epwe unuseoch me naffun anisir.

**Neniachewe e angangen uruon chungame eoroni mei nap aninisin non pekin awatenon aninisin moni, kaworen neni mei mokukun, enuk mei kisasew ngeni pekin chungame, an epwe opochokuna uruon chungame eoroni me non neniachkewe non ei kinikin.**

### Kokotun Angang

- 3.1 Awatenoi aninisin moni non ewe kinikin faniten emwicheich ese angang faniten moni, ekewe mei suk mokurer non pekin chungame, me pisinis e amomo chungame. Ei mei pachenong an epwe watteno ewe Portland Arts Education and Access fund, an epwe fori ew anen monitonong non an ewe kinikin Metro, non an fori mokutun an ewe county me city takises, me/ika anapanon moni ngeni ekewe county/city. Akkomwa aninisin moni ngeni ekewe chon chungame me programun me emwicheichen uruon chungame eoroni.
- 3.2 Awora aninisin ngeni ekewe chon chungame me chiechierkewe, non pekin aninisin moni, pwan kutengenir chon anisir, me chon eureurngenir faniten mamarir/train.
- 3.3 Forata ew programun kaworen neni epwe mokukun, pachenong anen ar repwe tongeni sinei ian repwe porousngenir me ie, aninisin rent, akokoten projectun ekewe neni, aninisin pisekin, me matchin grant, kutton anen aninisin, me aninisin an epwe watteno tourer ngeni ekewe neni. Kutta anen repwe tongeni aea ekewe neni mei peon.

- 3.4 Akokota ennukun aninisin monien uruon chungame an epwe anapano anonopokun ar angang.
- 3.5 Angangfengen won ew mokutukut an epwe forata ew foundationun chon aninisin ren monien art me ekewe kompeni mei tongeni aninisin won moni ngeni chon chungame an epwe anapano aninisin me angangfengen.
- 3.6 Katon sokopaten anen amarin ewe United Arts Fund (ew angangen fundraise an United Way), an epwe opochokunano ewe programun fang ngeni nenien angang me awora pisekin kinisiou ngeni ekewe emon me emon chon aninisin. Aworasefani an kompeni me foundation aninisin ngeni ei aninisin moni.
- 3.7 Kinisoungeni me anisi wisen ekewe emwicheichen aninisin non met ra fori faniten ei kokot, ussun chowan MusicPortland, Oregon Media Production Association, Portland Events and Film Office, Arts Concierge, pwan ekoch.
- 3.8 Amari suukun ekiek sokopat non pekin chungame non ach acheu porous non neniachkewe me programin anapano chon kakaton.
- 3.9 Fori ew ponuwen an epwe eochuno nonomwun ewe Portland'5 Nenien Uruon Chungame me ekewe chon akaea ewe neni.

## Oruwanun met sia anganga: aea neniachkewe ne angangen uruon chungame eoroni an epwe anapano mamarin monien mwuu.

**Neniachewe e angangen uruon chungame eoroni mei anapano wisan ussun emon chon omokutu me amari monien mwuu, anapano angang, forutan pisinis, eochusefanin, me euchunon manawen meinisin.**

### Kokotun Angang

- 4.1 Awora aninisin eochunon mwonien mwuu non ewe sectorun amomo chungame, keon, kachito, uuf, me design. Porousngeni me angang ngeni emwicheichen aninisin om kopwe kutta me awora watten aninisin.
- 4.2 For ew anen epwe wor chon kakamo seni ewe sectorun amomo chungame. Porousngeni me angang ngeni emwicheichen aninisin om kopwe kutta sokkun anen aninisin an epwe fori ew nenien kamo.

- 4.3 Wanong moni an epwe amari uruon chungame eoroni an epwe amanawasefani downtown Portland, nenien city, nenien teninimw, Main Streets, kinikinin eoroni, me ananap.
- 4.4 Apochokuna kompeni me angang fengen me emwicheichen turis an epwe anapano turis faniten eoroni.
- 4.5 Ochuu uruon chungame eoroni an epwe eochuweno nenien angang. Fori anen epwe napeno angang ngeni neniachkewe mei angangen uruon chungame eoroni.
- 4.6 Research me anapano ew kokotun mamarin monien mwuu.
- 4.7 Research me anapano ew kokotun mamarin monien mwuu.



## Enimwuen met sia anganga: Anamota neniachewe e angangen uruon chungu me eoroni an epwe emon eueha chiechian non amareochun me pochokunen meinisin neniachkewe.

Uruon chungu me eoroni ramen siineno, eueha, me watte aninisin ussun chiechian aninisin aramas, pochokunen aramas, chikaren aramas, waa, tumunun aramas, pekin osukun, me pwan ekoch pekin.

### Kokotun Angang

- 5.1 Mwuun neniachkewe repwe wanong moni an epwe amari uruon chungu me eoroni an epwe pisekin angang faniten aninisin aramas me ekoch pekin, ussun pochokunen aramas, waa, eimweimw, omwokutun aramas, tumunun aramas, me pwan ekoch. Anomwu uruon chungu me eoroni non om ekiek pwun pwungun osukosuk. Fori anen epwe pochokun program non ekoch neni.
- 5.2 Fori kapachen me chekin an epwe pwari eochunon ach aea uruno chungu me eoroni non chomong pekin angang an epwe eochuweno met sia anganga.

- 5.3 For program epwe apwapwai me anisi ochufengen, ekewe re karan poputa, me suukun ekiek non neniachkewe non unusen ewe kinikin.
- 5.4 Katon me amari enuk epwe apwapwai ika niwinii uruon chungu meren aramas me non amarin nenien emon me emon. Katon 1.3. Fori an epwe wor eochun memef ika angang non programun chungu ren aramas non ewe kinikin.

# AKOKOTA EMWENIN

## Kumien Kasiin Nesor

Chochon ei kumi ra kefinita meren souemwenin ekewe neni mei fitikich, mei pachenong Clackamas, Multnomah, me Washington; ekewe city Beaverton, Hillsboro me Portland; the Metro regional government (mwuun ewe kinikinin metro); me the Regional Arts & Culture Council (Councilun Eoroni & Chungu non ekewe Kinikin, RACC). Ekei a esisinen sokopaten neoton aramas, sokun aramas, eoroni, me oekin kaeo (awewe, weiresin terir; Ekewe Mei Chon, Re Ikewe, Katx, Chon Asia, Chon Pacific, ekewe mei wor Onuwen Unucher; LGBTQIA+; me nenien ekewe ra wes me sounfiu). Iir mei pwan esisinen chomongun kinikinin non neniachkewe, mei pachenong uruon chungu, eoroni, monien mwuu, pekin kaeo, pisnis, kopwung, “chiechier esapw ururun chiechier,” me pwan ekoch.

**Trieste Andrews**, *Oregon City Arts Commission*

**Nicole Bradin**, *Explore Tualatin Valley*

**Julie Bunker**, *Milestone Initiatives*

**Joe Cantrell**, *Chon Chungu*

**Gus Castaneda**, *Aloft Hotels*

**Corinn deTorres**, *Chapel Theatre*

**Jerry Foster**, *PassinArt*

**Subashini Ganesan-Forbes**, *New Expressive Works*

**John Goodwin**, *Portland Art Museum*

**Kimberly Howard Wade**, *Caldera Arts*

**Joaquin Lopez**, *Creative Laureate of Portland*

**Jaimie Lorenzini**, *City of Happy Valley*

**Barbara Mason**, *Chon Chungu*

**Jeremy Okai Davis**, *Chon Chungu*

**Sushmita Poddar**, *Small business Owner*

**Sankar Raman**, *The Immigrant Story*

**Barbara Steinfeld**, *Consultant*

**Karis Stoudamire-Phillips**, *MERC Commission*

**Toni Tabora-Roberts**, *Sou eueur*

**Tonisha Toler**, *Collins Foundation*

**Tammy Jo Wilson**, *Art in Oregon*



## Kumien Tumwunun Project

Dianne Alves, Executive Director, Clackamas County Arts Alliance

Laura Becker, Chon Tumwunu Programun Uruon Chunga, City of Beaverton

Jeff Hawthorne, Chon Tumwunu Programun Uruon Chunga, Cityn Portland

Stephan Herrera, Chon Enefin nefinen Chon Eureur Faniten Ennukun Uruon Chunga me Council, Cityn Portland

Michele McCall-Wallace, Chon Tumwunun Chungan Eoroni, Cityn Hillsboro

Mario Mesquita, Chon Tumwunu Porous me Pochokunen Mokutukut, RACC

Cristina Nieves, Policy Director, Commissioner Sharon Meieran, Multnomah County

Nancy Nye, Meinapen Uruon Chunga, Eoroni me Fansoun, Cityn Hillsboro

Raziah Roushan, Executive Director, Tualatin Valley Creates, Washington County

Robyn Williams, Executive Director, Portland'5 Neni Uruon Chunga, Metro

## Kumien Eureur

Kumien Akokota Eoroni

Martin Cohen

Linda Flynn, Ph.D.

Marlena Reese McKnight, Ed.D.

David Plettner-Saunders

Kumien Teninimw Watte

Eric Block

Nicole Adams

LaShawn McCarthy Jr.

Michael Alexander, Ret., Urban League of Portland

Kathleen Holt, Holt Strategies

## Chon awora moni

Ei angang ese tongeni pwonuta ika esapw pwunun ekei chon aninis ren moni:

Cityn Beaverton

Cityn Hillsboro

Cityn Portland

Clackamas County

Metro

An James F. Me Marion L. Miller Foundation  
Multnomah County

Nongeni Portland

Kinikinin Koenin Chukun Tualatan & Kinikinin Recreation

Tualatin Valley a Fori

Washington County

## Ion e awora Sasingin Cover

- **Asan me peniefefinin:** Joe Kye soundcheck meren ewe Walters
- **Asan me peniemwanin:** Bootycandy—The OUTwright Theatre Festival 2019
- **Faan me peniefefinin:** RACC Garden Party, Dodge & Burn Studios
- **Faan me peniemwanin:** Dodge & Burn Studios

Ren sopesopun porous, makngeni [cityartsprogram@portlandoregon.gov](mailto:cityartsprogram@portlandoregon.gov)  
[ourcreativefuture.org](http://ourcreativefuture.org)